

### SYMBOL KEY

- Mounting Point (Lighting)
- 1-1/2" Schedule 40 Galvanized Steel Pipe
- 12-Gauge Half-slotted Metal Framing Strut Channel
- Mega-Gridlock
- Wall Mount Flange
- Chauvet Professional Ovation F-55FC
- Chauvet COREpar 80
- Chauvet DJ Shocker 90 IRC

### LABEL LEGEND

Channel

Unit Number

DMX Address

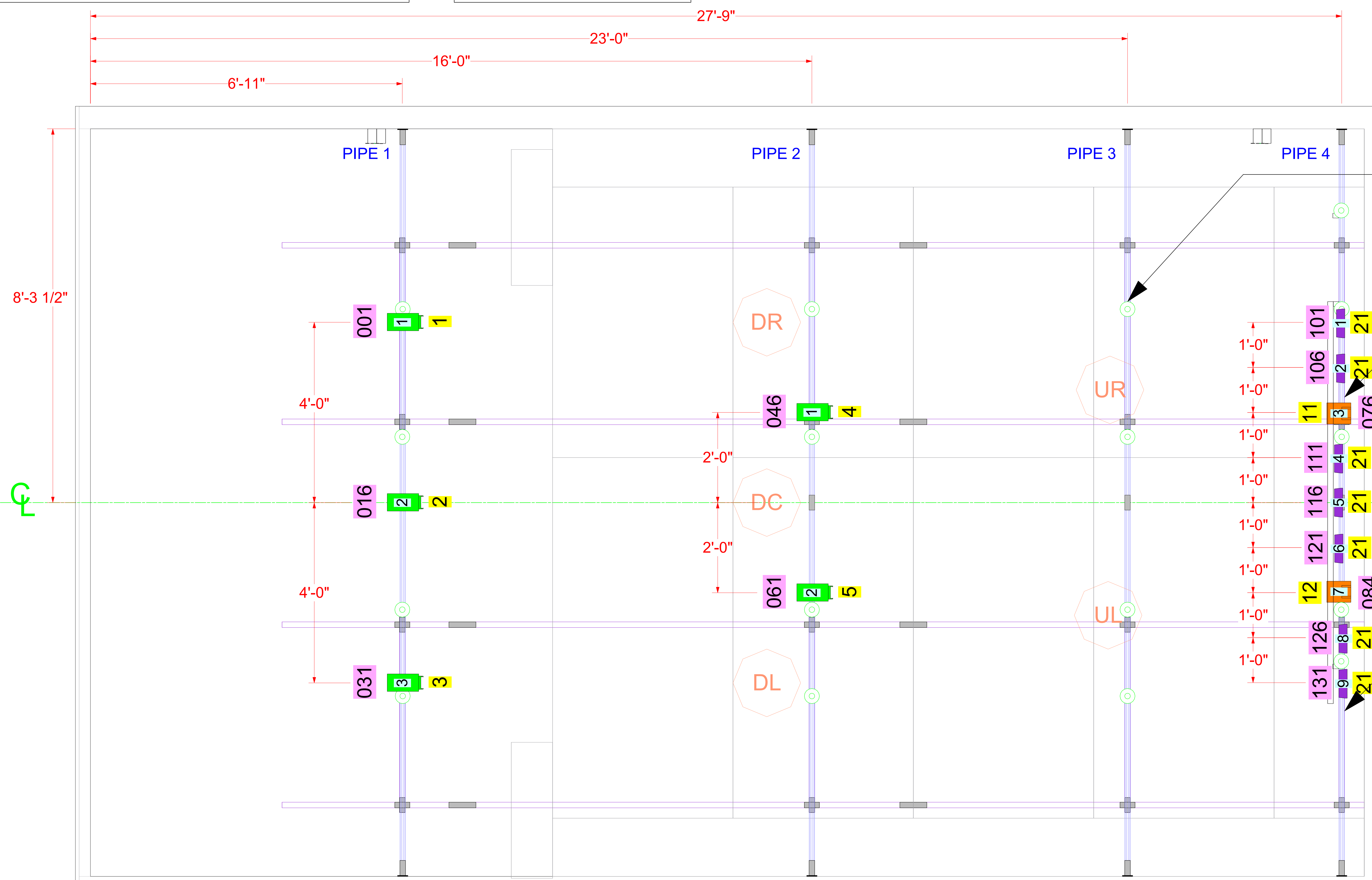
### Channel Hookup

Channel	Address	Inst Type	Wattage	Purpose	Color	Position	Unit #
1	001	Chauvet Ovation F-55 FC	44W	DR	RGBAL	PIPE 1	1
2	016	Chauvet Ovation F-55 FC	44W	DC	RGBAL	PIPE 1	2
3	031	Chauvet Ovation F-55 FC	44W	DL	RGBAL	PIPE 1	3
4	046	Chauvet Ovation F-55 FC	44W	UR	RGBAL	PIPE 2	1
5	061	Chauvet Ovation F-55 FC	44W	UL	RGBAL	PIPE 2	2
11	076	Chauvet COREpar 80 USB	75 W	UR	RGB	PIPE 4	3
12	084	Chauvet COREpar 80 USB	75 W	UL	RGB	PIPE 4	7
21	101	Chauvet DJ Shocker 90 IRC	41 W	STROBE	5000K	PIPE 4	1
21	106	Chauvet DJ Shocker 90 IRC	41 W	STROBE	5000K	PIPE 4	2
21	111	Chauvet DJ Shocker 90 IRC	41 W	STROBE	5000K	PIPE 4	4
21	116	Chauvet DJ Shocker 90 IRC	41 W	STROBE	5000K	PIPE 4	5
21	121	Chauvet DJ Shocker 90 IRC	41 W	STROBE	5000K	PIPE 4	6
21	126	Chauvet DJ Shocker 90 IRC	41 W	STROBE	5000K	PIPE 4	8
21	131	Chauvet DJ Shocker 90 IRC	41 W	STROBE	5000K	PIPE 4	9

### Instrument Schedule

Position	Unit #	Inst Type	Wattage	Purpose	Color	Channel	Address
PIPE 1	1	Chauvet Ovation F-55 FC	44W	DR	RGBAL	1	001
PIPE 1	2	Chauvet Ovation F-55 FC	44W	DC	RGBAL	2	016
PIPE 1	3	Chauvet Ovation F-55 FC	44W	DL	RGBAL	3	031
PIPE 2	1	Chauvet Ovation F-55 FC	44W	UR	RGBAL	4	046
PIPE 2	2	Chauvet Ovation F-55 FC	44W	UL	RGBAL	5	061
PIPE 4	1	Chauvet DJ Shocker 90 IRC	41 W	STROBE	5000K	21	101
PIPE 4	2	Chauvet DJ Shocker 90 IRC	41 W	STROBE	5000K	21	106
PIPE 4	3	Chauvet COREpar 80 USB	75 W	UR	RGB	11	076
PIPE 4	4	Chauvet DJ Shocker 90 IRC	41 W	STROBE	5000K	21	111
PIPE 4	5	Chauvet DJ Shocker 90 IRC	41 W	STROBE	5000K	21	116
PIPE 4	6	Chauvet DJ Shocker 90 IRC	41 W	STROBE	5000K	21	121
PIPE 4	7	Chauvet COREpar 80 USB	75 W	UL	RGB	12	084
PIPE 4	8	Chauvet DJ Shocker 90 IRC	41 W	STROBE	5000K	21	126
PIPE 4	9	Chauvet DJ Shocker 90 IRC	41 W	STROBE	5000K	21	131

2 Paperwork Scale: NTS



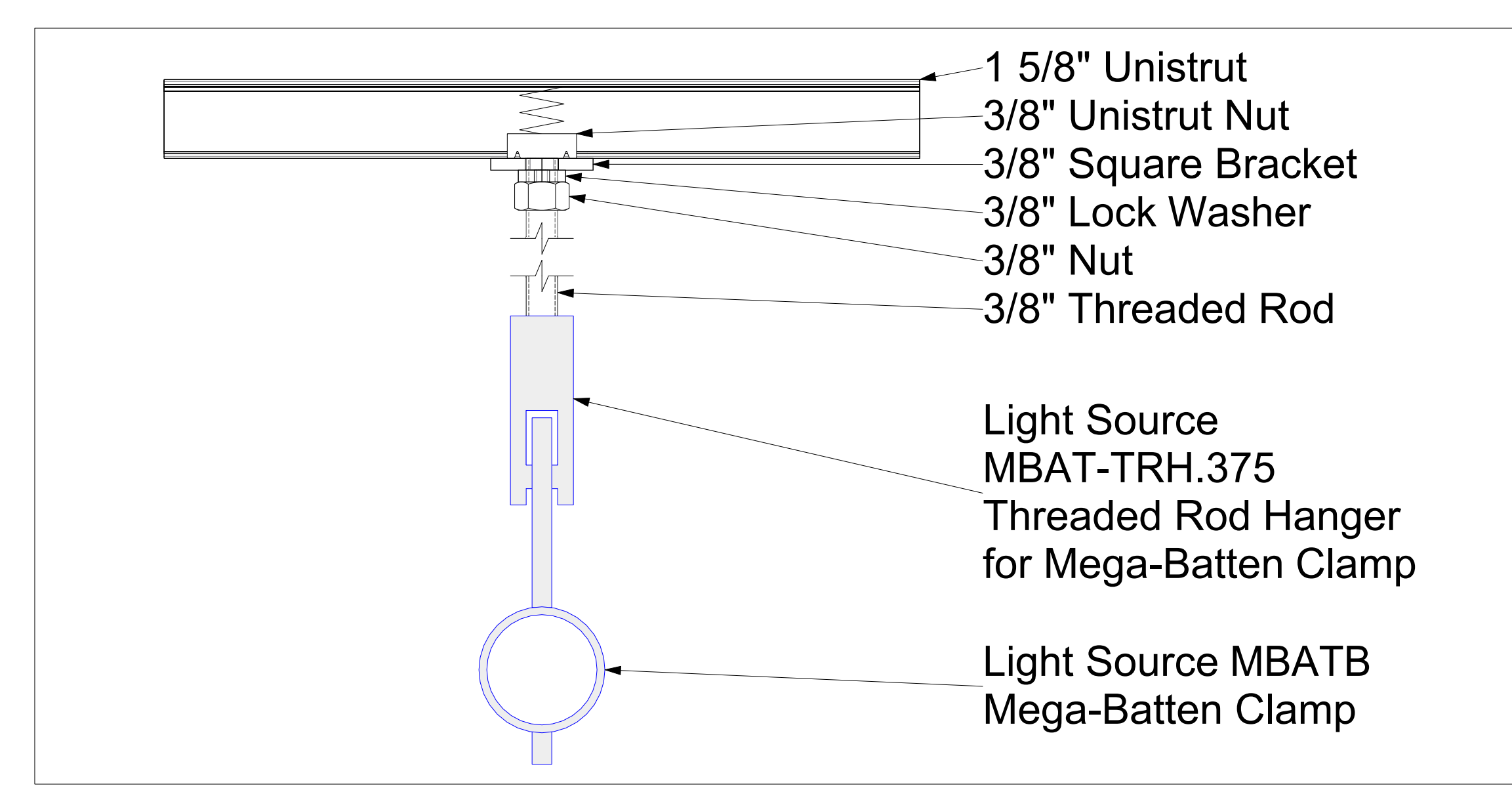
UNISTRUT TO LIGHTING PIPE CONNECTIONS: 4 CONNECTIONS PER PIPE BETWEEN CLOUD HANGS AT CROSS PIECES AND AT CENTER TWO LONG PIECES. SEE DETAIL DRAWING 2.

PHOTOGRAPHIC BACKDROP ATTACHED TO LIGHTING PIPE

UPSTAGE LIGHTS OVERHUNG TO CLEAR BACKDROP

LIGHTING PIPES HUNG FROM UNISTRUT ABOVE AT HEIGHT 11'-6". SEE DETAIL DRAWING 2.

1 Light Plot Scale: 1" = 1'-0"



3 Unistrut to Lighting Pipe Detail Scale: Half Actual Size

DMX Channel Value	Display Readout	Red Value	Green Value	Blue Value	Amber Value	Lime Value	
000	005	000	000	000	000	000	
006	013	C3050 - Md Yellow	233	163	020	123	255
014	021	C3040 - Lt Yellow	224	158	047	255	231
022	028	C3240 - Amb Yellow	180	080	000	245	255
028	035	C2340 - Vt Amber	240	107	081	255	213
036	043	C2040 - Lt Amber	230	130	082	255	152
044	051	C2050 - Md Amber	255	000	025	255	194
052	059	C2060 - Dk Amber	255	000	024	255	150
060	067	C1090 - Lt Red	255	037	027	030	038
068	075	C1080 - Md Red	255	034	017	030	000
076	083	C1020 - NG Pink	238	135	129	255	255
084	091	C1030 - Md Pink	255	131	123	255	195
092	099	C1830 - Dk Pink	255	165	123	255	210
100	107	C1250 - Md Red Amber	255	000	041	195	055
108	115	C1080 - Dk Red Amber	255	000	045	120	030
116	121	C1650 - Magenta	255	050	115	050	115
122	130	C5170 - Dk Magenta	127	035	117	000	000
131	138	C5020 - Lt Lavender	122	122	142	251	255
138	146	C5000 - Lt Blue	000	255	197	100	255
147	154	C5020 - Vt Blue	158	255	189	000	255
155	162	C5430 - Lt Blue 2	000	255	190	000	243
163	170	C2070 - Blue	043	255	210	043	036
171	178	C5050 - Md Blue	000	255	211	000	181
179	186	C5060 - Dk Blue	000	210	205	000	118
187	194	C5890 - Indigo	065	000	210	040	055
195	202	C5060 - VDK Blue	000	203	230	000	040
203	210	C5081 - VDK Blue2	040	199	240	000	045
211	218	C4370 - Vt Green	027	225	028	016	104
219	226	C4070 - Green	049	255	055	120	090
226	234	C4550 - Turquoise	060	250	109	000	245
235	242	C4560 - Aqua	020	240	126	036	255
243	250	---	000	000	073	030	053
251	255	---	000	000	000	000	000

Note: The colors above are simulated renditions of the color output produced compared with other similar incandescent products. Chauvet makes no guarantee of the color output accuracy.

DMX Channel Value	Display Readout	Red Value	Green Value	Blue Value	Amber Value	Lime Value
000	005	2850K	000	000	000	000
006	025	3000K	171	154	255	255
026	050	3200K	186	195	161	255
051	075	3500K	161	252	179	255
101	125	4000K	175	221	192	255
125	150	4500K	188	221	204	255
151	175	5000K	163	239	213	255
176	200	5600K	157	247	223	255
201	225	6000K	154	251	230	255
226	250	6500K	153	253	238	255
251	255	---	000	000	000	000

Note: The color temperatures above are simulated renditions of the color output produced compared with a tungsten lamp at the specified color temperature. Chauvet makes no guarantee of the color output accuracy.

4 Ovation Color Wheel Chart Scale: NTS



PRODUCER: Nick Wylie  
 DESIGNER: Sohail e Najafi  
 ASSOC. DESIGNER: Derek Jones  
 SYSTEMS SPECIALIST: Vincent A Sanchez

NO.	Date	Desc
V3	6/3	Initial Version
V4	7/10	Acoustic Panels, Audio Install, Lighting as built
V5	7/23	Acoustic Panels as built
V6	8/13	Lighting Updates as built



STUDIO 1

LOCATION:  
 5716 Cahuenga Blvd  
 North Hollywood, CA 91601

Light Plot  
 Sheet 2 of 5  
 CAD FILE: Nick Wylie Studio - Lighting\_v6.wxp  
 SCALE: AS SHOWN  
 DATE: 08-13-2020  
 DRAWN BY: DWJ / VAS